



Customer information packet

EM3314T

15HP, 3490RPM, 3PH, 60HZ, 215T, 3734M, OPSB, F1

Class - None

Division - Not Applicable

Specifications

Enclosure	OPSB
Frame	215T
Frame Material	Steel
Frequency	60.00 Hz
Motor Letter Type	Three Phase
Output @ Frequency	15.000 HP @ 60 HZ
Phase	3
Synchronous Speed @ Frequency	3600 RPM @ 60 HZ
Voltage @ Frequency	460.0 V @ 60 HZ 230.0 V @ 60 HZ
XP Class and Group	None
XP Division	Not Applicable
Agency Approvals	CURUSEEV NEMA PREMIUM NEMA_PREMIUM UR CSA EEV
Ambient Temperature	40 °C
Auxillary Box	No Auxillary Box
Auxillary Box Lead Termination	None
Base Indicator	Rigid
Bearing Grease Type	Polyrex EM (-20F +300F)
Blower	None
Current @ Voltage	17.500 A @ 460.0 V 35.000 A @ 230.0 V
Design Code	B
Drip Cover	No Drip Cover
Duty Rating	CONT
Efficiency @ 100% Load	90.2 %
Electrically Isolated Bearing	Not Electrically Isolated
Feedback Device	NO FEEDBACK
Front Face Code	Standard

Part detail

Revision	AA
Type	AC
Mech. spec.	37F614
Base	
Status	PRD/A
Elec. spec.	37WGS867
Layout	37LYF614
Eff. date	05-01-2024
CD Diagram	CD0005
Poles	02
Leads	9#12
Proprietary	False
Created date	06-17-2010

Front Shaft Indicator	None
Heater Indicator	No Heater
High Voltage Full Load Amps	17.5 a
Insulation Class	F
Inverter Code	Inverter Ready
KVA Code	G
Lifting Lugs	Standard Lifting Lugs
Locked Bearing Indicator	No Locked Bearing
Motor Lead Exit	Ko Box
Motor Lead Quantity/Wire Size	9 @ 12 AWG
Motor Lead Termination	Flying Leads
Motor Standards	NEMA
Motor Type	3734M
Mounting Arrangement	F1
Number of Poles	2
Overall Length	16.32 IN
Power Factor	89
Product Family	General Purpose
Pulley End Bearing Type	Ball
Pulley Face Code	Standard
Pulley Shaft Indicator	Standard
Rodent Screen	None
Service Factor	1.15
Shaft Diameter	1.375 IN
Shaft Extension Location	Pulley End
Shaft Ground Indicator	No Shaft Grounding
Shaft Rotation	Reversible
Shaft Slinger Indicator	No Slinger
Speed	3475 rpm
Speed Code	Single Speed
Starting Method	Direct on line
Thermal Device - Bearing	None
Thermal Device - Winding	None
Vibration Sensor Indicator	No Vibration Sensor

Winding Thermal 1

None

Winding Thermal 2

None

Nameplate

NP3553LUA

CAT.NO.	EM3314T						
SPEC.	37F614S867G1						
HP	15						
VOLTS	230/460						
AMPS	35/17.5						
RPM	3475						
FRAME	215T	HZ	60	PH	3		
SF	1.15	CODE	G	DES	B	CLASS	F
NEMA NOM. EFF	90.2	PF	89				
RATING	40C AMB-CONT						
CC	010A	USABLE AT 208V			N/A		
DE	6307	ODE	6206				
ENCL	OPSB	SN					
VPWM INVERTER READY							
CT30-60(2:1) VT3-60(20:1)							
USABLE AT	50HZ 15HP 190/380V 41.6/20.8A						SF1.0

Accessories

Part number	Description	Multiplier
37-1404	C FACE KIT	A8

AC Induction Motor Performance Data

Record # 37431

Typical performance - not guaranteed values

Winding: 37WGS867-R001		Type: 3734M		Enclosure: OPSB	
Nameplate Data			460 V, 60 Hz: High Voltage Connection		
Rated Output (HP)		15	Full Load Torque		22.6 LB-FT
Volts		230/460	Start Configuration		direct on line
Full Load Amps		35/17.5	Breakdown Torque		92 LB-FT
R.P.M.		3500	Pull-up Torque		28.5 LB-FT
Hz	60 Phase	3	Locked-rotor Torque		37.5 LB-FT
NEMA Design Code	B KVA Code	G	Starting Current		109.3 A
Service Factor (S.F.)		1.15	No-load Current		5.49 A
NEMA Nom. Eff.	90.2 Power Factor	79	Line-line Res. @ 25°C		0.7163 Ω
Rating - Duty		40C AMB-CONT	Temp. Rise @ Rated Load		46°C
S.F. Amps			Temp. Rise @ S.F. Load		59°C
			Locked-rotor Power Factor		33
			Rotor inertia		0.31 LB-FT ²

Load Characteristics 460 V, 60 Hz, 15 HP

% of Rated Load	25	50	75	100	125	150	S.F.
Power Factor	58	78	86	89	89	88	89
Efficiency	90.3	92.5	92.2	90.9	89.2	87.1	89.9
Speed	3572	3545.3	3514.9	3479.7	3441.4	3398.7	3457
Line amperes	6.69	9.59	13.2	17.3	22	27.3	20.1

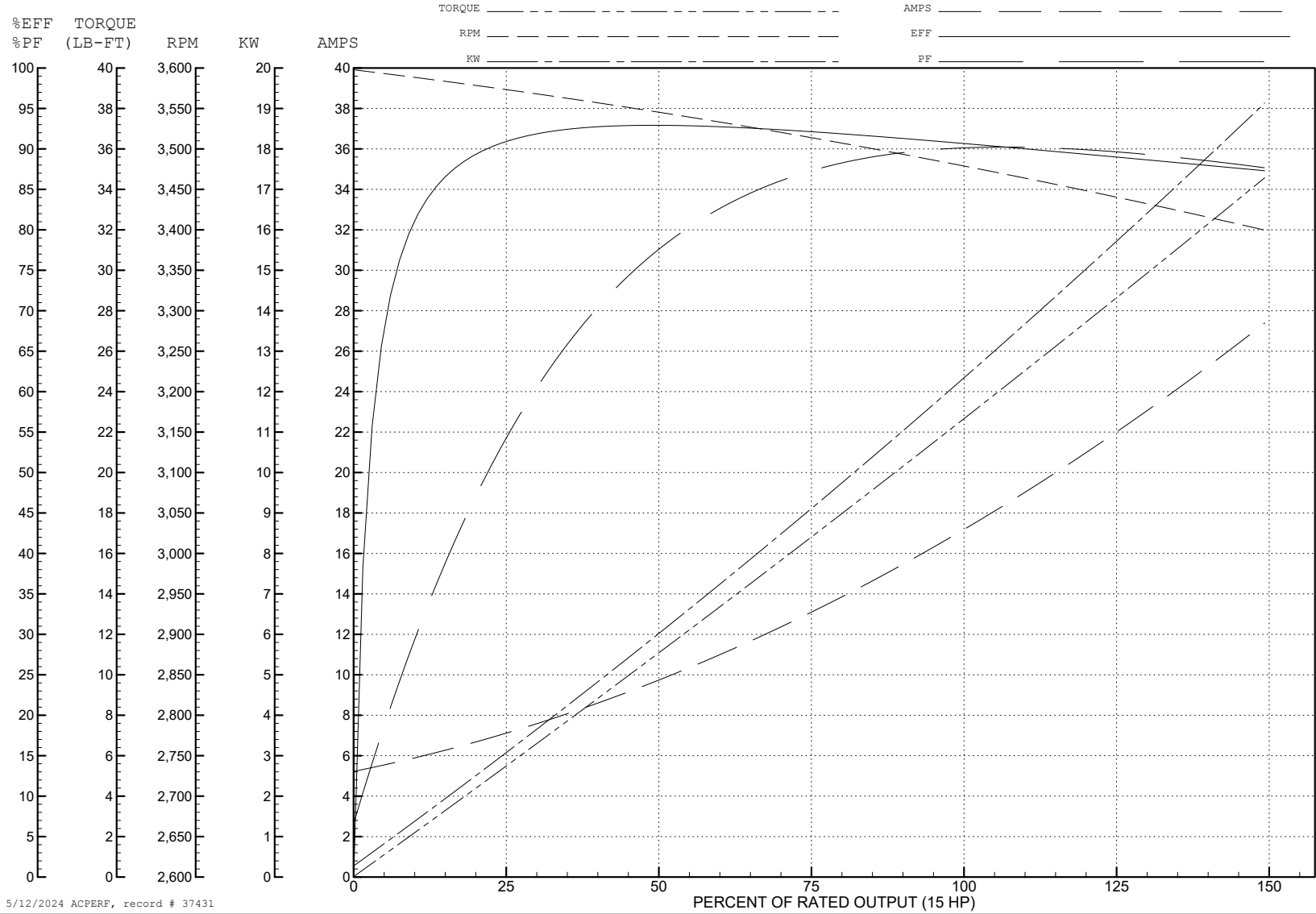
ABB Motors and Mechanical Inc.

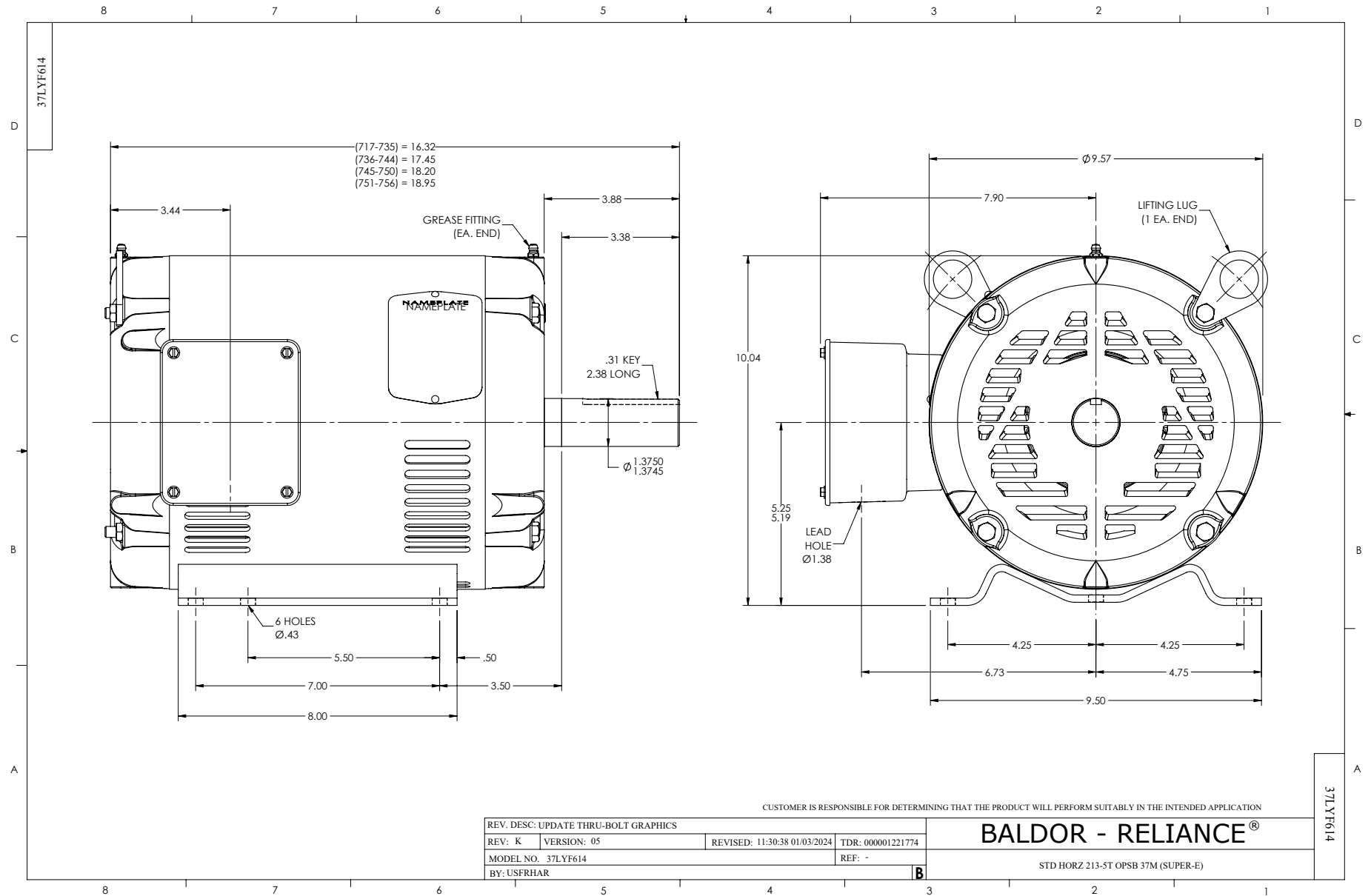
WINDING # 37WGS867

Typical performance - not guaranteed values.

15 HP 3 PH 60 HZ 3500 RPM 460 V 3734M

TORQUES (LB-FT): PO=92 PU=28.5 LR=37.5 LRA=109.3





CD0005



LOW VOLTAGE
(2Y)



LINE

HIGH VOLTAGE
(1Y)



LINE

NOTES:

1. INTERCHANGE ANY TWO LINE LEADS TO REVERSE ROTATION.
2. OPTIONAL THERMOSTATS ARE PROVIDED WHEN SPECIFIED.
3. ACTUAL NUMBER OF INTERNAL PARALLEL CIRCUITS MAY BE A MULTIPLE OF THOSE SHOWN ABOVE.
4. LEAD COLORS ARE OPTIONAL. LEADS MUST ALWAYS BE NUMBERED AS SHOWN.

REV. DESC: REVISE TO SHOW OPTIONAL COLORS			
REV. LTR: E	BY: JLP	REVISED: 01/19/99 10:15	TDR: 0171435
S00000		FILE: AAA00005140	MDL: -
		MTL: -	

BALDOR ELECTRIC Co.

3PH, DV, 9 LEADS

CD0005